



Technical Information

This wide range of new holds is manufactured using *Mild Surface* technology. While most rival holds have an irregular surface structure, consisting of sand grains, holds made using *Mild Surface* technology have a structure made up of fine beads of the same size. These fine beads protrude above the surface of the hold, meaning that it does not clog up or wear out so quickly. The surface of the hold is also more user-friendly for the skin and there is much less friction between the hold and the fingers than in the case of standard holds.

The new series of holds are designed to be fixed to the wall using three common types of screws:

DIN: 7991 – countersunk head screw

DIN: 912 – socket head cap screw

ISO: 7380 – socket button screw

Size and shape permitting, holds are made as shell moulds, which makes them much lighter while retaining the original strength of the hold. Another advantage is that these holds, when fixed onto a climbing wall, are less likely to twist around than standard holds do at the same torque.

All holds are certified by the Engineering Test Institute, a renowned European testing centre, in accordance with the ČSN EN 12572-3 standard.



DIN: 7991



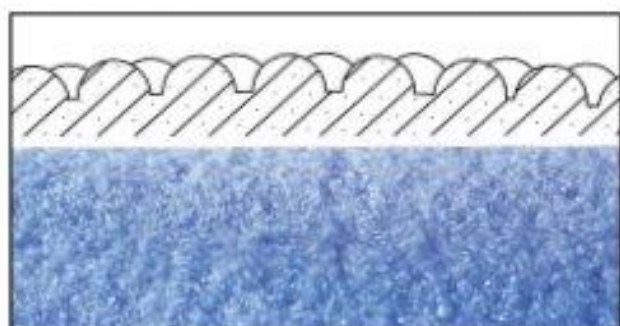
DIN: 912



ISO: 7380



Skafepinový chyt
Hollow hold



Mild Surface